

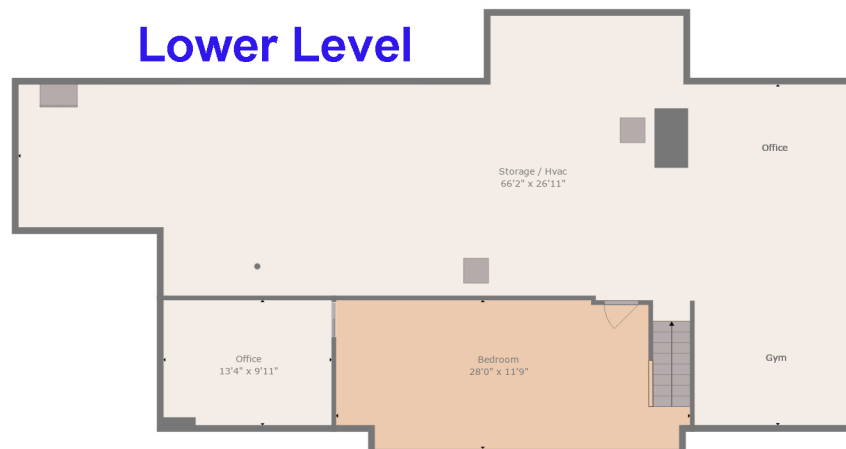
**Main Floor**



**Second Floor**



**Lower Level**



**463 Chambers Lane, West Chester, PA 19382**

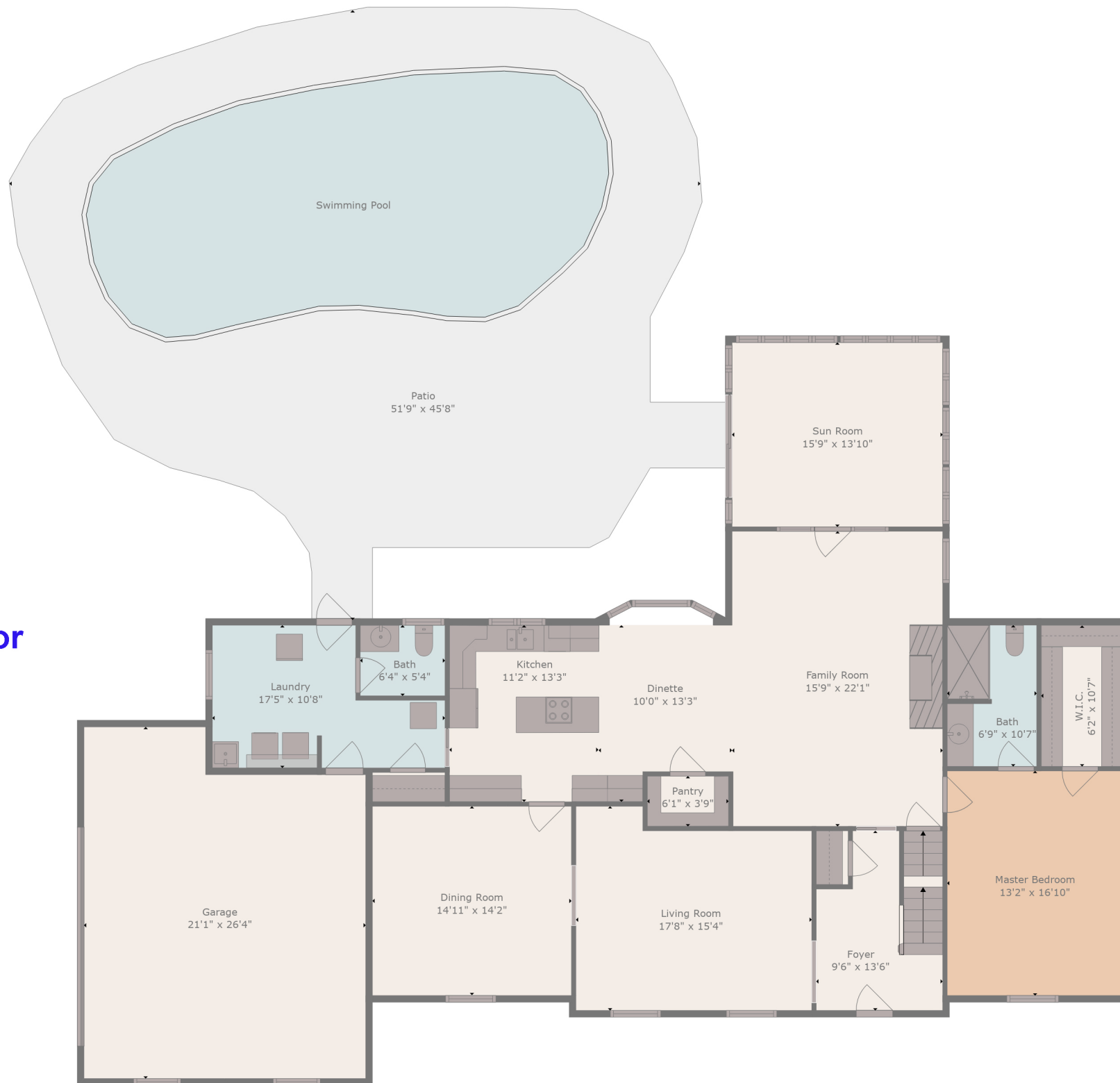
**TOTAL: 3245 sq. ft**

LOWER LEVEL: 469 sq. ft, MAIN FLOOR: 2057 sq. ft, SECOND FLOOR: 719 sq. ft  
 EXCLUDED AREAS: STORAGE / HVAC: 1264 sq. ft, GARAGE: 513 sq. ft, PATIO: 1134 sq. ft,  
 BAY WINDOW: 10 sq. ft, LOW CEILING: 183 sq. ft, ATTIC: 279 sq. ft

Measurements Are Deemed Highly Reliable And Accurate But Are Not Guaranteed.



## Main Floor



**463 Chambers Lane, West Chester, PA 19382**





## Second Floor

### 463 Chambers Lane, West Chester, PA 19382





## 463 Chambers Lane, West Chester, PA 19382

